

Newsletter - 6th February 2024



Dear Parents/Carers,

This half term has flown past! Here are some highlights from each year group:

- Year R, the children have enjoyed finding out about people who help them around the school, and even looked round Mr Wileman's work shed to find out about all the different jobs he does round the school.
- Year 1, the children found dragon eggs! They also made nests for the eggs as part of forest school.
- Year 2, the children have been learning all about Africa, at forest school they made African bread and African stew! Both were very yummy!

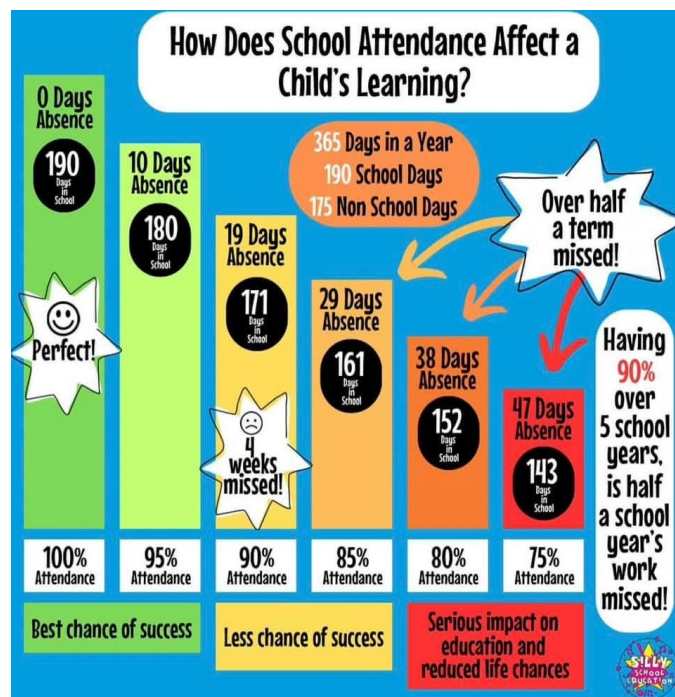
Attendance

I hope you all received the recent email about our new attendance policy, this is also available to read on our school website. There is a big push from the government and West Sussex as a local authority for all schools to improve attendance. Attendance really does matter, if your child's attendance is below 90% they are considered to be 'persistently absent' even if these are authorised absences e.g. illness or medical appointments. 90% attendance equates to 19 days of learning missed over the whole school year. As the policy states if a child's attendance (unauthorised or authorised) is below 90% parents and carers will receive a letter to inform you of this. We are here to work with you to improve your child's attendance so please do come and talk to us if we can help you.

School timings

Just a reminder the school gate closes at **8.45am**, and registers are taken in class at **8.45am**. If you arrive after this time please take your child round to the school office to be registered, if children arrive after 8.45am they will be recorded as late on the register.

Wishing you all a lovely half term break, Monday 19th February is an INSET day so children return to school on Tuesday 20th February. Mrs Lucy Whiffin, Headteacher



Dates for your Diary

February

Friday 9th February—Last Day of Term
Monday 12th—Friday 16th February HALF TERM BREAK

Monday 19th February—INSET DAY

Tuesday 20th February—First day back

March

Thursday 7th March—World Book Day

Tuesday 12th March—Class Photos

Friday 15th March—Red Nose Day

Tuesday 19th March—Parents Consultations

Wednesday 20th March—Parents Consultations

Thursday 28th March—Last day of term

Friday 29th March—Monday 15th April EASTER BREAK

April

Monday 15th April—First day of Summer term

May

Monday 6th May—BANK HOLIDAY

Monday 20th May—Friday 24th May Sports Week

Friday 24th May—Last day of term

Monday 27th May—Friday 31st May HALF TERM BREAK

June—Sports day date coming soon

Monday 3rd June 2024—INSET DAY

Friday 14th June—Summer Fair, more details to follow

July

Tuesday 23rd July—Last Day of term

Forest School

Forest School sessions are now on a **Monday**. Year 1 sessions are in the morning and year 2 sessions are in the afternoon, both on a fortnightly basis.

Year 1 morning session

Monday 26th February— Hedgehogs Class

Monday 4th March—Owls Class

Monday 11th March—Hedgehogs Class

Monday 18th March—Owls Class

Year 2 afternoon session

Monday 26th February— Squirrels Class

Monday 4th March—Badgers Class

Monday 11th March—Squirrels Class

Monday 18th March—Badgers Class

Children must wear warm layers for these sessions and have waterproof coats and trousers. Children come to school wearing their forest school clothes.

Information for all settings for Department for Education: Guidance on measles outbreaks

There have been recent localised outbreaks of measles in England and there is risk of further outbreaks unless action is taken to increase Measles, Mumps and Rubella (MMR) vaccination take up.

Measles spreads very easily among those who are unvaccinated, especially in nurseries and schools. The best protection against measles for children and adults is to get both doses of the MMR vaccine. It is never too late to have these vaccinations. Please contact your doctor's surgery for more information.